

## Christmas Island Playground

### **Project Overview**

This proposal outlines the development of two new playgrounds at Christmas Island District High School (CIDHS). This is replacing infrastructure that was removed in 2019. There is also some non-compliant equipment that remains in the current “Junior Play” area, which is currently the only available play space for students. This equipment presents safety concerns and needs to be removed and replaced with a new playground that meets current safety and regulatory standards.

Our planning spans over 7 years with numerous consultations from experts and other education facilities with the aim of achieving;

- a) A “Phase out - phase in” replacement of non-compliant, severely rusted, broken and non-compliant play equipment and safety surfacing.
- b) Action to remove and consolidate End of its Life areas and play equipment
- c) Strategically replace what was removed in 2019.

This proposal outlines our final phase developing two new playgrounds at Christmas Island District High School (CIDHS) and community play area.

In summary, for over three years our existing playground equipment—now aged and beyond its intended lifespan—has presented ongoing safety concerns. It has been consistently identified that these areas are well overdue for strategic planning (now in place) and replacement to meet current safety and regulatory standards. Most importantly, this is essential to ensure the safety and wellbeing of our students and the wider community.

Based on discussions with schools in Perth to benchmark playground costs, the lowest estimate for a basic playground is approximately \$240,000. At present, CIDHS does not have a safe and compliant playground for students aged 6 and above, and there are no suitable facilities of this kind anywhere on the island. In response, we are proposing the construction of two large playground areas to better meet the needs of both the school and the wider community.

Due to the remoteness of Christmas Island, building costs are significantly higher than on the mainland. Limited access to materials and trades, combined with high freight costs, has a major impact on the overall project budget. For example, concrete, a key material for playground installation, costs \$250 per cubic metre in Perth, compared to \$1,950 per cubic metre on the island. We have also recruited support from playground expertise that visit the island on occasion that are willing to help at those times of visit to help save costs.

This investment will provide a long-term, compliant recreational facility for both the school and wider island community, with an expected lifespan exceeding 15 - 20 years.

The design draws on:

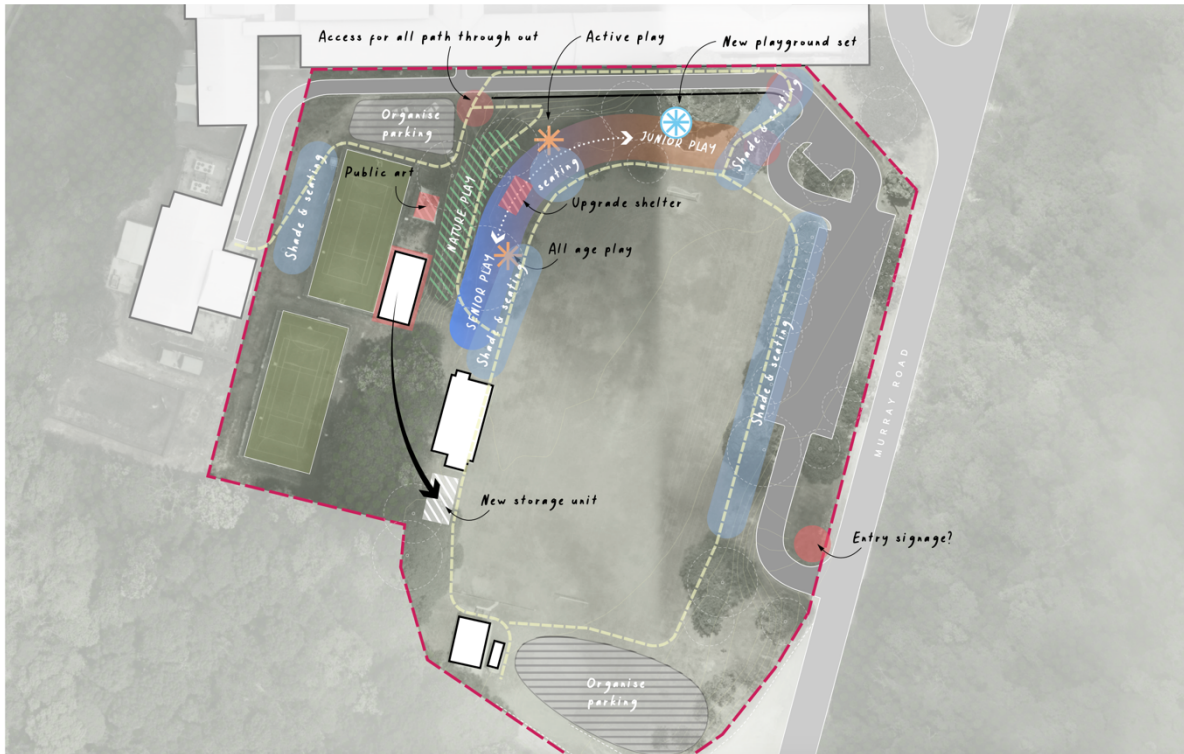
- Previous concept planning (JLL, 2022)
- Local and regional playground benchmarks (including Cocos Islands and Perth schools).
- Community consultation and Playground Committee input
- AS 4685 — Playground Equipment Standards
- AS 4422 — Playground Surfacing Standards

### **Location**

The proposed playground areas will be constructed on the site of the former playground (removed in 2019) and along the edge of the oval where current noncompliant play equipment is located.

Key site features:

- Flat and accessible terrain
- Existing natural shade from surrounding trees at Junior Play
- Central location within the school grounds
- Suitable for shared school and community use
- Junior play area is planned taking surrounding underground tree roots into account



JLL 2022 Plan

### Purpose and Users

The playground is designed to:

- Support students aged 6–17 years
- Provide safe structured and unstructured play opportunities
- Encourage physical activity, social interaction, and wellbeing
- Serve as a community asset outside school hours

### Economic and Social Value

The playground's value will

- Supports youth physical and mental health
- Reduces anti-social behaviour by providing safe recreation
- Enhances community infrastructure on a remote island
- Provides long-term value over 15+ years

### Design concept

The playground will include two distinct zones:

#### *Junior Play Area (Ages 6–12)*

- Size: Approx. 20m x 12m
- Surfacing: Sand or soft fall
- Features:
  - Marine-themed play structure (boat/barge inspired)

- Sensory play elements
- Climbing and imaginative play equipment
- Could include a local barge/boat – negotiation with IOTA and Linx.

#### Senior Play Area (Ages 12–17)

- Size: Approx. 20m x 12m
- Surfacing: Soft fall
- Features:
  - Ninja-style obstacle course
  - Strength and agility equipment
  - Social gathering areas

#### Design Principals

The project aligns with key planning principles identified in the JLL report:

- **Durability:** Marine-grade materials suitable for coastal conditions
- **Safety:** Compliance with Australian Standards for playgrounds
- **Accessibility:** Inclusive design for a range of abilities
- **Shade & Shelter:** Protection from sun and rain
- **Community Use:** Designed for after-hours and weekend access
- **Cultural Relevance:** Incorporates island themes and identity

#### Life span

Estimated lifespan: 15 years plus

Marine grade materials selected for high durability in remote, coastal environments

#### Maintenance Plan

Ongoing maintenance will include:

- Term-based safety inspections
- Annual compliance checks
- Early intervention repairs to extend lifespan
- Surface upkeep (sand replenishment or soft fall repairs)

#### Community and Stakeholder Support

- Playground Committee established
- Fundraising already undertaken
- Consultation with school and community – please see multiple letters of support
- Alignment with previous master planning work

#### Contractor

- **Ultimate Finish Construction.**  
(Experience in local construction and remote logistics)

#### Estimated Project Budget

##### 1. Site Preparation

Item	Estimated Cost
Clearing, levelling, earthworks	\$30,000
Drainage	\$20,000

**PRL have said they will donate the machinery and time to conduct the clearing, levelling and earthworks.**

## 2. Surfacing

Item	Estimated Cost
Sand (material + install) 12x20m Junior Play	\$80,000 priced with UFC
Soft fall material + install 12x20m Senior area	\$150,000 By Softfall Guys

Note: Sand will potentially be a better long-term choice in the Junior play area as that area is heavily rooted from trees & roots have potential to reach to the surface under soft floor which stays damper than topsoil and would potentially cause movement/tears in the rubber soft fall within a few years time after the install.

## 3. Retaining/Edging

Item	Estimated Cost
Aluminium sleeper retaining wall (materials & install)	\$30,000 estimate with UFC

## 4. Playground Equipment

Item	Estimated Cost
Junior equipment (marine themed combinations)	\$250,000
Senior ninja/Gladiator style equipment	\$250,000

\*Playground equipment price estimate reflects multiple combinations of sets, custom theming and multiple structures.

### Companies that have supplied quotes for UFC/CIDHS

Kaebel - The Nettle: \$180,000

ForPark Camelot: \$185,442

ForPark Cepheus: \$85,304

ForPark Man-o-war: \$87,500

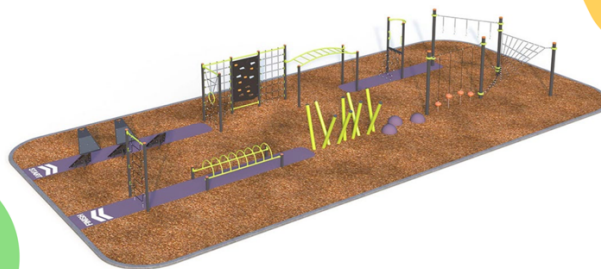
ForPark Marree: \$130,463

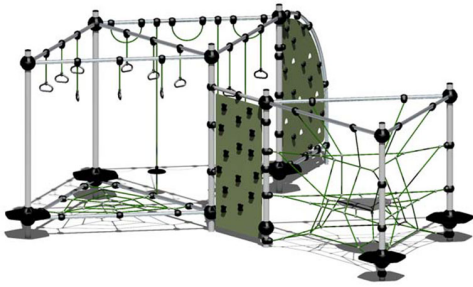
Kompan Sensory Dome: \$110,000



**The Nettle**

KL-2002  
\$180,000.00





**-Cepheus**  
 Equipment size : 8.7m x 7.5m  
 \$85,304

o

**Camelot-**  
 Equipment size: 16m x 9m  
 \$185,442



**-Marree**  
 Equipment size: 12m x 10m  
 \$130,463

**5. Shade Structures**

Item	Estimated Cost
Shade sails (fabrication + install 10x12m Junior play area, 20 x 12 senior)	\$104,000 (Shade Experience supply UFC install)
Concrete on island = \$1950/cubic meter. 1.5x.6x.6m footing will be required per column = 0.54m3 per post. 27 columns will be required for both play areas in total	\$28,431



#### 6. Freight and Logistics

Item	Estimated Cost
Playground Equipment & components freight	2.5 containers @ \$15500 + transport to and from ship = \$45,000
Materials Freight: <ul style="list-style-type: none"> <li>• Shade sales &amp; required steel posts</li> <li>• Certified playground Sand</li> <li>• Rubber Soft floor components</li> </ul> Aluminium sleepers & posts	Less then one container + courier - \$15,500 150 bulka bags in 9x containers + truck = \$145,000 2.5x containers + truck delivery \$45,000 1/3 container = \$5,000 <b>Total Freight cost: \$255,500</b>

#### 7. Installation and labour

Item	Estimated Cost
Construction & installation of play equipment	\$150,000

#### 8. Contingency

Item	Estimated Cost
12%	\$161,000

Both playground areas estimated total cost: \$1,508,931

This equates to approximately \$754,000 per playground, reflecting the increased costs associated with remote construction, freight, and limited local resources.

#### Other funding

We are applying for Qantas Regional Grant in the May 2026 round of applications and are contacting Google to try and gain funding support for this school and community project.

Artist interpretation







## **Christmas Island Robbers Rugby League Club Inc.**

**March 31, 2026**

**Principal and School Community Christmas Island District High School (CIDHS)**

**Christmas Island 6798**

Dear Principal and School Community

On behalf of the Christmas Island Robber Rugby League Club Inc., I am pleased to provide this formal letter of support for the proposed playground development at Christmas Island District High School.

Our club is deeply committed to promoting the health, wellbeing, and social development of young people on Christmas Island. We would like to acknowledge the full support that CIDHS has shown towards the CI Robbers Junior Program over the years, ensuring that our programs and activities can be delivered on a consistent, safe, and well-supported basis.

We recognise that high-quality recreational spaces play a vital role in encouraging active lifestyles, building confidence, and fostering positive community connections. The proposed playground will significantly enhance the school's facilities and provide a safe, engaging, and inclusive environment for children to learn, play, and grow.

We believe this project will deliver meaningful benefits not only to students but also to families and the broader community. By investing in modern, accessible play infrastructure, the school is demonstrating strong leadership in supporting the physical and social development of children on the island.

The Christmas Island Robber Rugby League Club Inc. fully endorses this initiative and commends Christmas Island District High School for its commitment to improving community resources. We are proud to support this important project and look forward to the positive impact it will bring.

**Yours Sincerely**

**Tim Briggs**  
**President**  
**Christmas Island Robbers Rugby League Club Inc**



# SHIRE OF CHRISTMAS ISLAND

PO Box 863, Christmas Island  
Indian Ocean 6798, Australia  
All correspondence should be addressed to the Chief Executive Officer

Telephone: 08 9164 8300  
Facsimile: 08 9164 8304  
Website: [www.shire.gov.cx](http://www.shire.gov.cx)

The Principal  
PO Box 866  
Christmas Island  
Indian Ocean 6798

## **Supporting Letter – School Playground Funding Application**

To Whom It May Concern,

As Shire President, I am pleased to provide my full support for the school's funding application to construct a new playground facility for the benefit of both students and the wider community.

The proposed project, as outlined in the detailed plan submitted to the Shire, reflects a well-considered and forward-thinking vision. The advanced playground design imagined by the school goes beyond traditional play spaces, incorporating inclusive, engaging, and multi-functional elements that will serve a broad range of users across all age groups. This thoughtful approach ensures the facility will not only meet current needs but remain a valuable asset for years to come.

In small and regional communities, shared infrastructure plays a critical role in fostering connection and wellbeing. This playground will significantly enhance local community infrastructure by providing a safe, accessible, and high-quality space for recreation, social interaction, and organised activities. Its availability for community groups and events further strengthens its value, creating opportunities for gatherings that bring people together and reinforce a sense of belonging.

The social impact of this development cannot be overstated. By creating a vibrant and welcoming environment, the playground will contribute to improving the overall social atmosphere of the community. It will encourage active lifestyles, support family engagement, and provide a central location where relationships can be built and strengthened. These are the types of lasting, positive outcomes that are essential to the sustainability and growth of small communities.

The Shire recognises the importance of initiatives such as this and acknowledges the considerable effort the school has invested in planning a facility that delivers both educational and community benefits. The proposed playground represents an investment not only in infrastructure, but in the social fabric of our region.

I strongly endorse this application and am confident the project will create enduring value and meaningful, long-term benefits for the entire community.

Yours sincerely,

Steven Pereira  
President



Australian Government

Department of Infrastructure, Transport,  
Regional Development, Communications, Sport and the Arts



**To Whom It May Concern,**

I am writing on behalf of the Indian Ocean Territories Health Service (IOTHS) to express our strong support for the proposed development of a new playground at Christmas Island District High School.

The school oval plays a vital role in fostering community connection. It is not only central to school activities but is also widely used for informal and organised sport and recreational activities outside of school hours. The space is regularly accessed for training, casual games, and physical activity by people of all ages across the community.

The development of a new playground will create a valuable and enduring community asset. It will encourage increased participation in physical activity, support healthier lifestyles, and provide a safe and engaging environment for children and families. Importantly, it will further strengthen social connection by offering a shared space for community interaction and recreation.

As a health service, we recognise the significant impact that accessible recreational infrastructure has on both physical and mental wellbeing. This project aligns strongly with preventative health priorities and community wellbeing outcomes.

We strongly endorse this initiative and believe it will deliver substantial and lasting benefits to both the school and the broader Christmas Island community.

Please do not hesitate to contact us should you require any further information.

**Warm Regards**

*Jfidler*

**Jacqueline Fidler**

A/g Health Service Manager • Indian Ocean Territories Health Service • Indian Ocean Territories Branch • Territories Division

[Jacqueline.fidler22@infrastructure.gov.au](mailto:Jacqueline.fidler22@infrastructure.gov.au)

+61 8 9164 8333 • M +61 040 232 6588

Department of Infrastructure, Transport, Regional Development, Communications, Sport and the Arts

CONNECTING AUSTRALIANS • ENRICHING COMMUNITIES • EMPOWERING REGIONS

[infrastructure.gov.au](http://infrastructure.gov.au)



*I acknowledge the traditional custodians of this land on which we meet, work and live.*

*I recognise and respect their continuing connection to the land, waters and communities.*

*I pay my respects to Elders past and present and to all Aboriginal and Torres Strait Islander people.*

Wednesday 1<sup>st</sup> April 2026

Dear Principal and School Community,

I am writing to offer my strong support for the proposed playground development at Christmas Island District High School.

In my work as a therapist supporting the Christmas Island community over the past few years, I have seen how important it is for children and families to have access to spaces where they can be outside, move freely, and connect with others. There is strong evidence that outdoor play supports children's mental health and wellbeing, including their ability to regulate emotions, build confidence, and develop social skills.

Play is a central part of how children make sense of their world. It gives them a way to express themselves, work through experiences, and build resilience over time. Having safe and engaging outdoor spaces can make a meaningful difference, particularly in a remote community where options are more limited.

The proposed playground will offer a valuable space not only for students during the school day, but also for families and the broader community outside of school hours. Opportunities like this support connection and contribute to a stronger sense of belonging across the island.

I commend the school for the thought and care that has gone into this project and strongly support its development.

Yours sincerely,



Beth Rad  
Registered Counsellor & EMDR Therapist  
Tide Mill Therapy & Consulting



Dear Principal and School Community,

On behalf of PRL Group, we are pleased to provide our strong support for the proposed playground development at Christmas Island District High School.

As a long-standing company operating on Christmas Island, we are proud to be part of a close and supportive community. Many of our employees live on the Island with their families, and we recognise the importance of safe and welcoming spaces where children can play, connect and enjoy the outdoors.

We support the vision of creating a playground that is accessible to both students and the wider community. With limited play equipment available for children on the Island, this development will provide meaningful opportunities for families and community members to come together outside school hours, supporting wellbeing and connection.

Supporting initiatives that benefit the broader community is a priority for PRL Group. In addition to our support, we would welcome the opportunity to assist with earthworks associated with the development, subject to further discussion.

We believe this project represents a valuable investment in the future of the Christmas Island community. It will deliver lasting benefits for local families, and we are proud to support an initiative that strengthens community connection and supports the next generation. We encourage funding bodies to give this project full and favourable consideration.

Please do not hesitate to contact us if you require any further information.

Yours sincerely,

A handwritten signature in blue ink, appearing to read 'J Hampton'.

Jack Hampton  
Communications and Stakeholder Engagement Lead



#### Australia

6 Thorogood Street, Burswood WA 6100  
PO Box 401, Victoria Park WA 6979  
T +61 8 6250 4900  
E [info@prlgroup.com.au](mailto:info@prlgroup.com.au)

ABN 77 009 396 543 trading as Christmas Island Phosphates

#### Christmas Island

31 Lam Lok Loh, Christmas Island WA 6798  
PO Box 104, Christmas Island WA 6798  
T +61 8 9164 8400

[www.prlgroup.com.au](http://www.prlgroup.com.au)

**Building Our Sustainable Future**



# WESTERNKIDSheALTH

Shenton Park | 6112 2977 | Hillarys | 9308 7722  
[info@westernkidshealth.com](mailto:info@westernkidshealth.com) | [www.westernkidshealth.com](http://www.westernkidshealth.com)

27<sup>th</sup> March 2026

**Subject: Letter of Support – Christmas Island District High School Playground Project**

Dear Principal and School Community,

On behalf of Western Kids Health, we are pleased to offer our strong support for the proposed playground development at Christmas Island District High School.

As an Occupational Therapist part of a Paediatric Allied Health Service in Perth, and working with children and families on Christmas Island, we understand firsthand the critical role that accessible, well designed outdoor play spaces play in children's development and community wellbeing. Play is not simply recreation, it is the primary vehicle through which children develop essential physical, cognitive, social, and emotional skills. A high quality playground provides the kind of rich sensory and movement experiences that are fundamental to healthy childhood development.

We are particularly supportive of the vision to design this playground as a shared, inclusive community space. Thoughtfully designed play environments that accommodate children of all ages and abilities promote participation, build social connections, and support the development of confidence and independence. Access to such spaces outside of school hours extends these benefits to families, community groups, and visitors, contributing to the broader health and wellbeing of the Christmas Island community.

From a Paediatric Occupational Therapy perspective, projects like this represent a meaningful investment in preventative health and early intervention. Opportunities for active, unstructured outdoor play are increasingly recognised as essential for supporting children's sensory processing, gross motor development, and social participation, areas that are central to our work with children every day.

We strongly encourage funding bodies to give this project their full and favourable consideration, and we look forward to seeing this initiative come to life for the benefit of our community.

Please do not hesitate to contact us should you require any further information or if there are opportunities for Western Kids Health to contribute further to this project.

Yours sincerely,

**Keely Kenton**

*Lead Occupational Therapist*

PH: 08 6112 2977 / E: [keely@westernkidshealth.com](mailto:keely@westernkidshealth.com)

OFFICIAL  
**OFFICIAL**



Wednesday, 1 April 2026

Christmas Island District High School  
Attention: Principal Sarah FAULKNER  
PO Box 866  
CHRISTMAS ISLAND WA 6798

**Dear Principal and Members of the School Community,**

On behalf of the Australian Federal Police, we are pleased to provide our support for the proposed playground development at Christmas Island District High School.

From a community safety perspective, well-designed playgrounds play an important role in providing young people with a secure, supervised environment in which to gather, socialise, and participate in positive activities. The proposed location of this playground, positioned away from the main road network, will significantly reduce traffic-related risk factors and enhance overall safety for children and families.

Importantly, the open and accessible design of the playground will facilitate a natural view to the playground and enable routine patrols by local police. This contributes to a visible safety presence and assists in deterring anti-social behaviour. Clearly defined, well-maintained, and actively used community spaces are well recognised as contributing to safer environments and stronger community ownership.

We also acknowledge the critical role that outdoor play has in supporting the physical health, mental wellbeing, and social development of children. Providing a safe and engaging outdoor environment encourages positive use of time, strengthens community connections, and supports early-intervention outcomes through inclusive and healthy activities for young people.

To make the playground accessible outside of school hours further enhances its value as a shared community asset. This approach promotes connection, spirit, and a sense of belonging within the broader Christmas Island community.

The Australian Federal Police strongly support this initiative and consider it a meaningful investment in both community safety and youth wellbeing.

Please do not hesitate to contact us should you require any further information.

Yours sincerely,

Sergeant Brad RICHARDS  
Officer in Charge  
Christmas Island Police Station

/ Christmas Island Police  
/ Telephone: +61 (08) 91648444  
/ Email: PO-Christmas-Island@afp.gov.au

OFFICIAL

The Principal  
Christmas Island District High School  
PO BOX 866  
Christmas Island  
Indian Ocean 6798

**RE: Letter of Support – Christmas Island District High School Playground Project**

Dear Principal and School Community,

On behalf of Altitude Island Logistics, I am writing to express my strong support for the proposed school playground project. This initiative represents far more than the development of a recreational space—it is an investment in the wellbeing, connection, and future of the broader community.

In small and remote communities, shared spaces are limited, and schools often serve as central hubs for social interaction. A well-designed playground will provide students with a safe and engaging environment that supports physical activity, social development, and overall health. These benefits are especially important in smaller communities where access to recreational facilities may otherwise be limited.

Beyond its value to students during school hours, the playground will also serve as a vital community asset. It will create a welcoming and functional gathering place for families, community groups, and local events. From informal weekend gatherings to organised activities, the space will encourage community engagement, strengthen relationships, and foster a greater sense of belonging.


Importantly, this project enhances the school's role as a multi-purpose community hub. By providing a safe, accessible, and functional space, it supports not only education but also broader social outcomes. Community groups, youth programs, and local initiatives will benefit from having a dedicated area to meet, interact, and grow.

In summary, the playground project will deliver lasting value by:

- Supporting children's physical, social, and emotional development
- Providing a shared space for community connection and events
- Strengthening the role of the school as a central community hub
- Enhancing overall wellbeing and livability in small communities

I fully support this project and believe it will have a meaningful and lasting positive impact on both the school and the wider community.

Kind Regards



Steven Pereira  
Managing Director



Subject: Letter of Support – Christmas Island District High School Playground Project

Dear Principal and Members of the School Community,

CiFi Pty Ltd is pleased to express its support for the planned playground project at Christmas Island District High School.

As a locally operated business that works closely with many families in the area, we understand how important it is for children to have access to safe, well-designed outdoor spaces. This development will provide a welcoming and engaging area where young people can be active, build friendships, and enjoy time outdoors in a safe environment.

We are especially pleased by the intention for the playground to be accessible beyond school hours. Creating a shared space for families and sports groups will strengthen community connections and provide ongoing benefits for people of all ages across Christmas Island.

Projects like this play an important role in enhancing both the school and the wider community. By investing in facilities that promote health, wellbeing, and social interaction, this initiative will contribute positively to the lifestyle of the island.

CiFi Pty Ltd strongly supports this proposal and the school's efforts to obtain funding. We respectfully encourage consideration of this project as a valuable investment in the future of the community.

Please feel free to contact us if any additional information is required.

Yours sincerely,  
Alexander Jansen  
Director  
CiFi Pty Ltd  
Alex@cifi.com.au